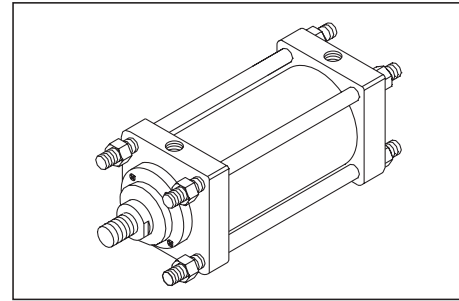


## KG Series - Knife Gate Cylinders

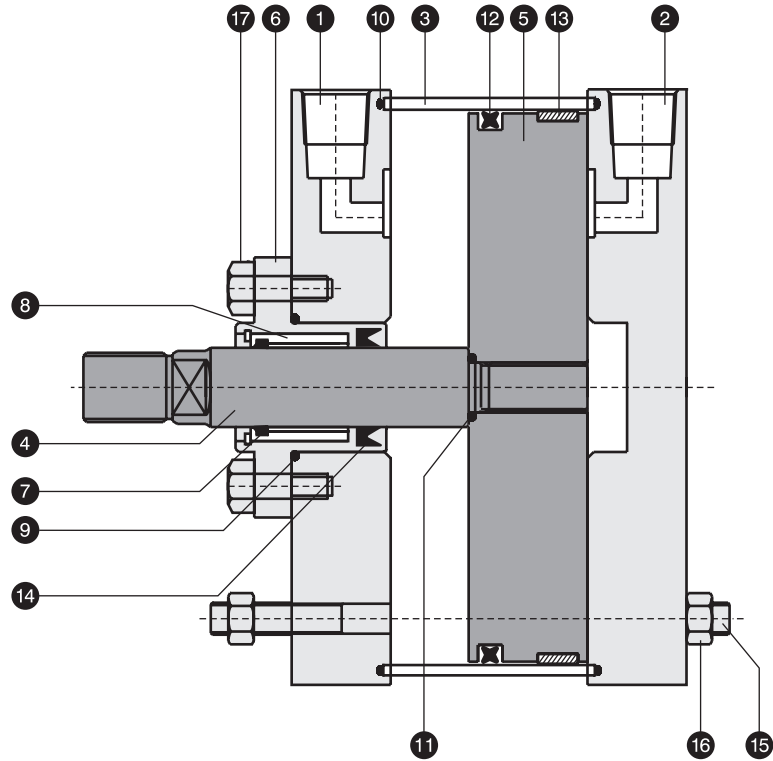
- Cylinders suitable for knife gate valve application.
- Bore size Ø 3.3" to Ø16".
- Tie rod extension on front side for easy mounting on the knife gate valve.
- The rod cum wiper seal is completely self compensating for zero leakage at all pressures.
- The piston quad seal provides excellent directional performance



### PART LIST

NO.	DESCRIPTION	QTY.
1	Front cover	1
2	Rear cover	1
3	Tube	1
4	Piston rod	1
5	Piston	1
6	Gland	1
7	Wiper seal	1
8	Bush bearing	1
9	'O' ring	1
10	'O' ring	2
11	'O' ring	1
12	Quad ring	1
13	Wear ring	1
14	Rod seal	1
15	Tie rod	4
16	Tie rod nut	4
17	Bolt	4

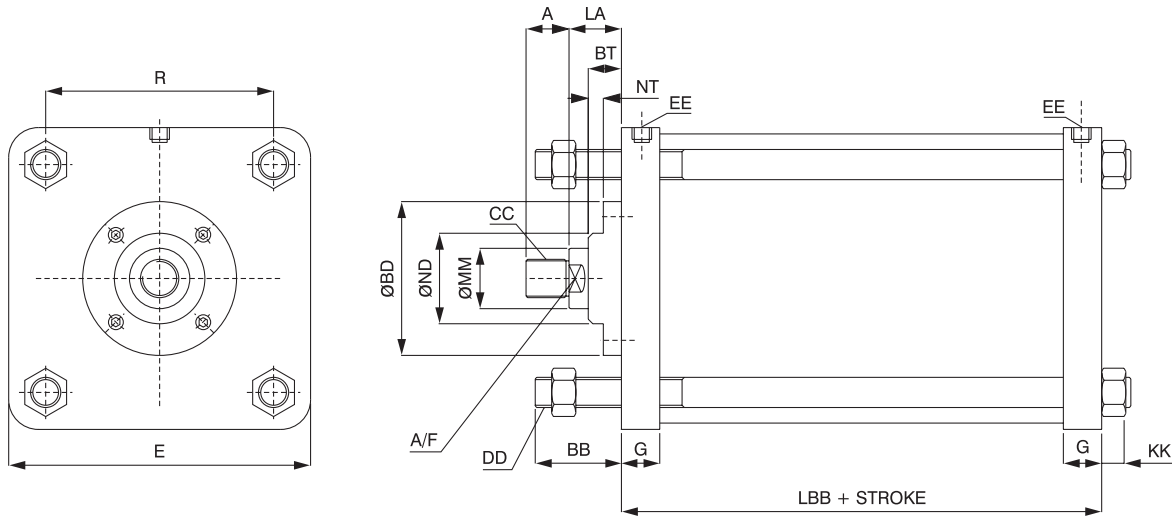
Seal kit consists of items 7, 9, 10, 11, 12, & 13.



### SPECIFICATIONS

Medium	Compressed Air, Filtered ( Lubricated or unlubricated )
Design	Pneumatic piston with non cushioning cylinder.
Max. operating pressure	Max air pressure 10 bar ( 150 PSI ) Max temperature 85° C
Temperature range	-10° C to 85° C ( 180° C for viton seals )
Material	a) End Cap : Medium carbon steel b) Piston Rod : EN8 Hard chrome plated ( SS 304 optional ) c) Piston : Medium carbon steel d) Seals : NBR ( Viton optional ) e) Barrel : Seamless, ID hard chrome plated
Stroke	As required with a maximum of 26".

## BASIC CYLINDER DIMENSIONS



BORE SIZE	MM	CC	A	LA	BB	DD	E	E NPT	G	R	LBB	BD	ND	BT	NT	A/F	K
3.3	984	7/8-14	1-1/8	0.75	1.375	3/8-24	4	1/4	1	2.759	3.25	----	1.709	0.15	----	7/8	11/32
4	984	7/8-14	1-1/8	0.75	1.375	3/8-24	4.5	3/8	1	3.32	3.25	----	1.709	0.15	----	7/8	11/32
5	984	7/8-14	1-1/8	1-1/2	1-13/16	1/2-20	5-1/2	3/8	1	4.10	3.25	3.129	1.63	.689	.217	7/8	7/16
7	984	7/8-14	1-1/8	1-1/2	2	5/8-18	7.5	3/8	1	5.728	3.25	3.129	1.63	.689	.217	7/8	9/16
8	984	7/8-14	1-1/8	1-1/2	2	5/8-18	8-1/2	3/8	1	6.44	3.25	3.129	1.63	.689	.217	7/8	9/16
10	984	7/8-14	1-1/8	1-3/4	2-1/2	3/4-16	10-5/8	1/2	1-1/4	7.92	4.0	3.129	1.63	.689	.217	7/8	21/32
12	1-3/8"	1-1/4-12	1-5/8	1-3/4	2-1/4	3/4-16	12.75	1/2	1-1/4	9.4	4.25	3.937	2.19	.791	.319	1-1/8	21/32
14	1-3/8"	1-1/4-12	1-5/8	1-3/4	2-1/2	7/8-14	14.75	3/4	1-3/8	10.9	4.79	3.976	2.19	.590	.314	1-1/8	3/4

NOTE : All dimensions are in inches.  
For higher size of cylinder contact us.

### Installation

The cylinder converts energy of compressed air into a useful thrust force. This force is available for the whole stroke of the cylinder. while installing the cylinder, ensure proper alignment and avoid side loading. Prevent dust & dirt from falling on the piston rod. Avoid excessive heat reaching cylinder by using heat shields.

### Servicing / Maintenance

- Shut off air supply and remove connections.
- Disconnect / Remove cylinder from the system.
- Remove tie rod nuts and dismantle the cylinder completely.
- Clean all the parts thoroughly.
- Remove any burrs or sharp edges.
- Take an appropriate seal kit & check the seal kit for damages / cuts / distortion. Seal kits to be stored in proper pack & in clean condition.
- Apply silicon grease provided with the seal kit at the time of assembly.
- Ensure proper orientation while assembling rod-cum-wiper seal.
- Do not use sharp tool to press the seals in position at the time of assembly.

### Use original Schrader seal kit

Bore Size	Seal Kit No.
3.3"	SK-K3.3
4"	SK-K4
5"	SK-K5
7"	SK-K7
8"	SK-K8
10"	SK-K10
12"	SK-K12
14"	SK-K14

### Ordering Information

<input type="checkbox"/> K	<input type="checkbox"/> G	<input type="checkbox"/>	<input type="checkbox"/>	<input type="checkbox"/>	<input type="checkbox"/>
Bore		N : Nitrile seal	B : Basic	Stroke	
		V : Viton seal	F : Flange		

Typical Example :  
7" bore X 300mm stroke basic cylinder : KG07NA300