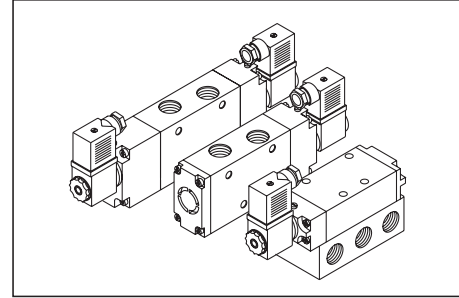


G 1/4 - 5/2 Solenoid Operated High Flow Valves (43 Series)

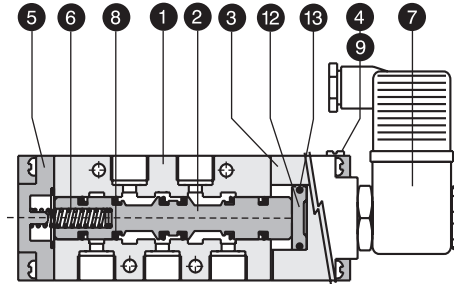
- Streamlined construction.
- Contoured dynamic seals ensure longer life
- Higher flow capacities.
- Manual override as a standard feature.
- Available with G 25 coil.



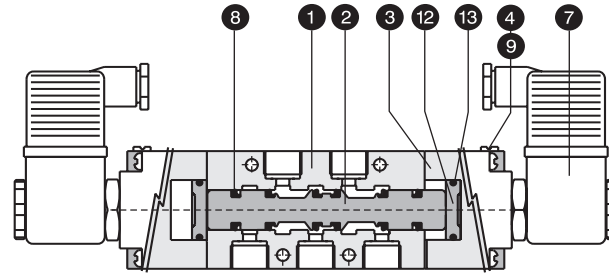
PART LIST

NO.	DESCRIPTION	QTY.	
		Single Sol.	Double Sol.
1	Valve Body	1	1
2	Spool	1	1
3	Solenoid Housing	1	2
4	Manual Override	1	2
5	Spring Housing	1	-
6	Compression Spring	1	-
7	Coil with plug in connector	1	2
8	Spool seal	6	6
9	M.O.Pin 'O' Ring	1	2
10	Sub base 'O' ring *	5	5
11	Sub base plate	1	1
12	Piston	1	2
13	Piston seal	1	2

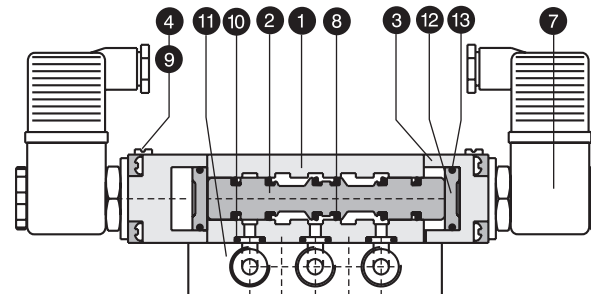
Seal Kit consists of item (2+8) ,9, 10 & 13
* (Item No. 10 With sub base kit only)



5/2 High Flow Single Solenoid Valve (Side Ported Design)



5/2 High Flow Double Solenoid Valve (Side Ported Design)

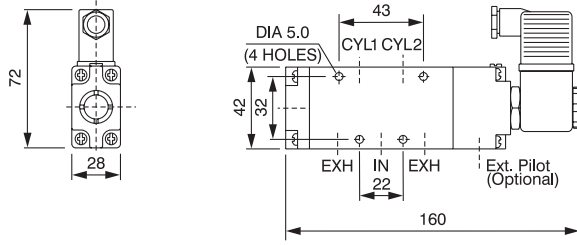
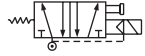


5/2 High Flow Double Solenoid Valve (Sub Base Design)

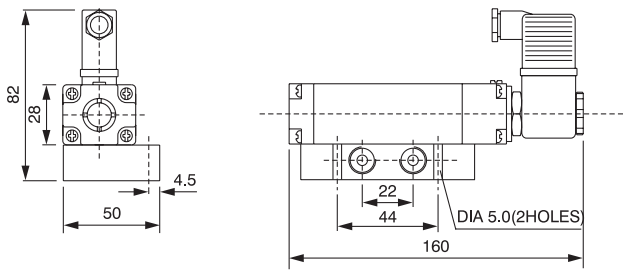
COIL SPECIFICATIONS

TYPE	Valve with (G25 - 3W) coil	
Construction	SS Plunger with NBR seals, SS magnet core assembled with brass adaptor	
Coil Voltages	AC : 24, 110, 240 V 50 Hz	DC: 12, 24V
Voltage Range	± 10%	
Power Consumption	AC : Pull : 7.5 VA, Hold : 5 VA	DC : 3 WATT
Duty cycle	100%	
Class of Insulation	F (Winding wire of class 'H' insulation)	
Degree of protection	IP 65 - IS 2147	
Cable connector	DIN 43650 - PG 9	

G 1/4 - 5/2 SINGLE SOLENOID HIGH FLOW VALVE



Side Ported Design



Sub Base Design

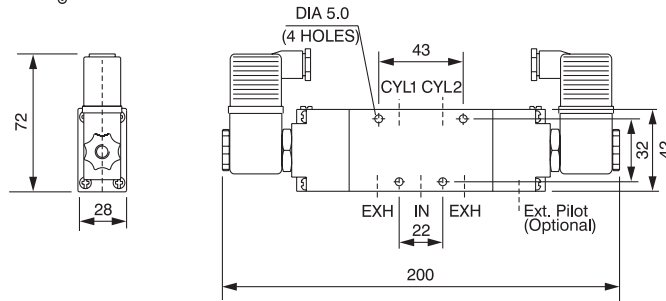
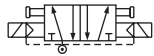
PART NOS.

Type	Side Ported	Sub Base
G 1/4 - 5/2 Single Solenoid High Flow Valve with G 25 Coil	A 43014	A 43214
Sub base valve without base plate	--	43114
Base plate	--	BS 14
Seal kit	SK 43014	SK 43214

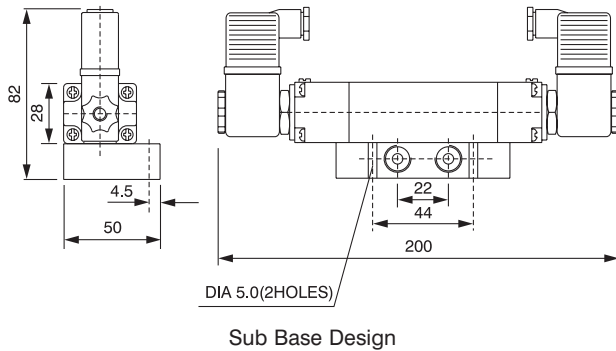
SPECIFICATIONS

Medium	Compressed air, filtered
Design	Spool type with air spring return
Working pressure	1.8 - 10 kg/sq.cm
Ambient / fluid temp.	- 10° C to 55° C
Cv (Nominal flow)	1.3 (1300 lit /min.)
Response time at 5 bar	ON time : 10 m.s. OFF time : 35 m.s.
Manual override	Screw type, detent
Optional features	PIC with light indicator External pilot actuation
Materials	Body & Spool : Aluminium Seals : NBR

G 1/4 - 5/2 DOUBLE SOLENOID HIGH FLOW VALVE



Side Ported Design



Sub Base Design

PART NOS.

Type	Side Ported	Sub Base
G 1/4 - 5/2 Double Solenoid High Flow Valve with G 25 Coil	A 43024	A 43224
Sub base valve without base plate	--	43124
Base Plate	--	BS 14
Seal kit	SK 43024	SK 43224

SPECIFICATIONS

Medium	Compressed air, filtered
Design	Spool type
Working pressure	1.5 - 10 kg/sq.cm
Ambient / fluid temp.	- 10° C to 55° C
Cv (Nominal flow)	1.3 (1300 lit / min.)
Response time at 5 bar	ON Time: 10 m.s.
Manual override	Screw type, detent
Optional features	PIC with light indicator External pilot actuation
Materials	Body & Spool : Aluminium Seals : NBR