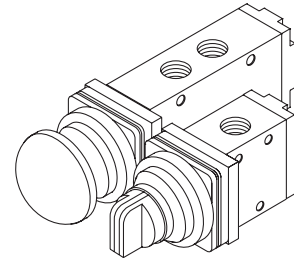


## G 1/4 - 5/2, 3/2 Manually Operated High Flow Valve

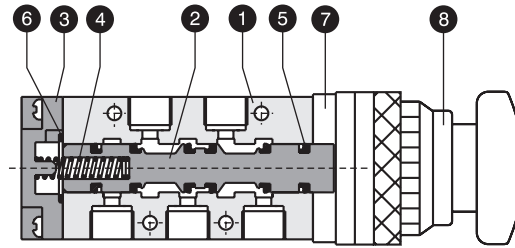
- Streamlined construction.
- Contoured dynamic seals ensures longer life.
- Higher flow capacities.
- Option of spring return mushroom button and detent type selector switch.



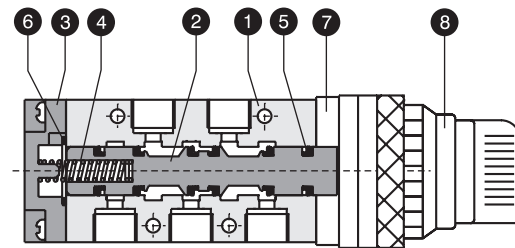
### PART LIST - 5/2 WAY VALVES

NO.	DESCRIPTION	QTY.	
		Selector Switch	Mushroom Button
1	Valve body	1	1
2	Spool	1	1
3	Spring housing	1	1
4	Spring	1	1
5	Spool seal	6	6
6	Gasket	1	1
7	Mounting plate	1	1
8	Mushroom type knob	-	1
9	Selector switch	1	-

Seal kit consists of items ( 2+5 ) & 6.



5/2 High Flow Mushroom Button Valve

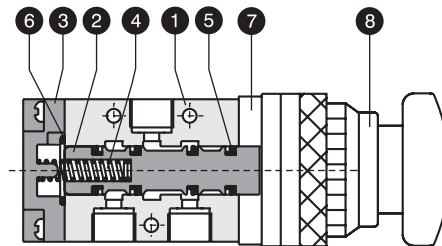


5/2 High Flow Selector Switch Valve

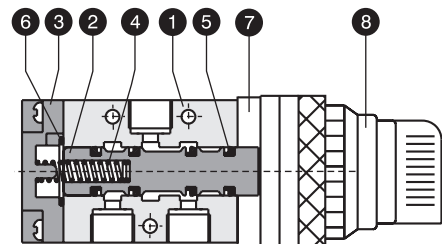
### PART LIST - 3/2 WAY VALVES

NO.	DESCRIPTION	QTY.	
		Selector Switch	Mushroom Button
1	Valve body	1	1
2	Spool	1	1
3	Spring housing	1	1
4	Spring	1	1
5	Spool seal	4	4
6	Gasket	1	1
7	Mounting plate	1	1
8	Mushroom type knob	1	1
9	Selector switch	1	1

Seal kit consists of items ( 2+5 ) & 6.

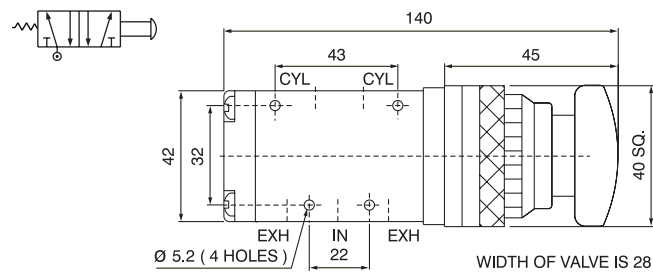


3/2 High Flow Mushroom Button Valve

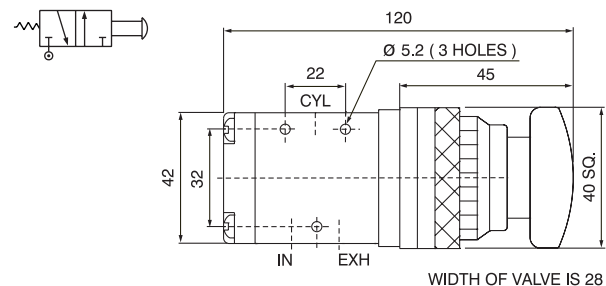


3/2 High Flow Selector Switch Valve

### G 1/4 - 5/2 AND 3/2 MUSHROOM TYPE HIGH FLOW VALVE

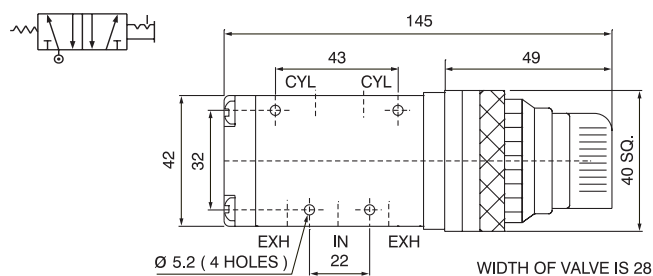


5/2 High Flow Mushroom Button Valve

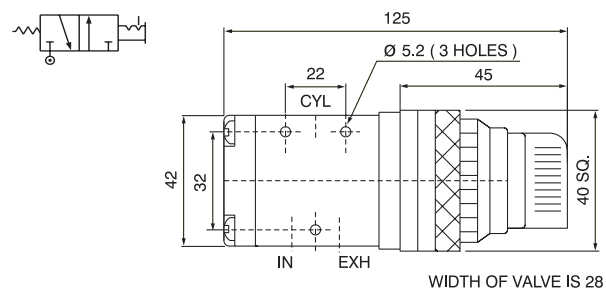


3/2 High Flow Mushroom Button Valve

### G 1/4 - 5/2 AND 3/2 SELECTOR SWITCH HIGH FLOW VALVE



5/2 High Flow Selector Switch Valve



3/2 High Flow Selector Switch Valve

#### PART NOS.

Type	Side ported Valve	Seal Kit
5/2 Mushroom Button Valve	43004 MS	SK 43004
3/2 Mushroom Button Valve	43003 MS	SK 43003

#### SPECIFICATIONS

Medium	Compressed air, Filtered
Design	Spool type with air spring return
Working pressure	10 bar max.
Ambient / fluid temp.	- 10° C to 55° C
Cv ( Nominal flow )	1.3 ( 1300 lit/min.)
Materials	Body & Spool : Aluminium Seals : NBR

#### PART NOS.

Type	Side ported Valve	Seal Kit
5/2 Selector Switch Valve	43004 SS	SK 43004
3/2 Selector Switch Valve	43003 SS	SK 43003

#### SPECIFICATIONS

Medium	Compressed air, Filtered
Design	Spool type with air spring return
Working pressure	10 bar max.
Ambient / fluid temp.	- 10° C to 55° C
Cv ( Nominal flow )	1.3 ( 1300 lit/min.)
Materials	Body & Spool : Aluminium Seals : NBR